

ESC-HPB series product installation manual

1. Plug installation instructions



Figure 1.Specification of plug parts

1.1. Strip the wire according to the parameters in Table 1.

Connector	Strip length (mm)
ESC-HPB300	22 ⁺¹
ESC-HPB350	22 ⁺¹

Table 1

1.2. Remove the tail nut, cable sealing body, and tail cover, and insert them into the correct cable in turn as shown in Figure 2.

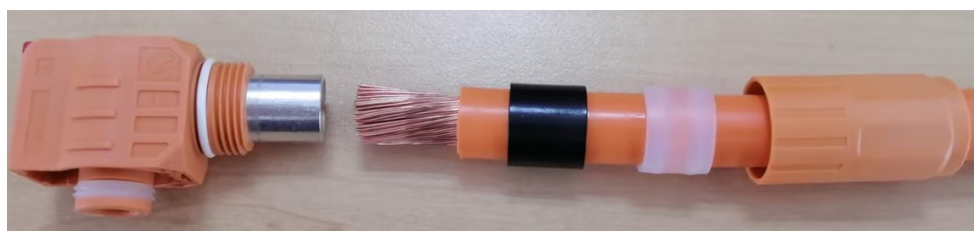


Figure 2

1.3. The plug adopts double type B crimping, and the contact resistance and pulling force meet the requirements in Table 2

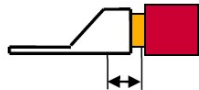
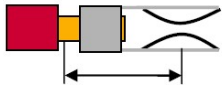
Connector	Cable size (AWG)	Crimping resistance		Pulling force
ESC-HPB300	2/0	$\leq 0.012m \Omega$		$\geq 3900N$
	3/0	$\leq 0.010m \Omega$		$\geq 7000N$
ESC-HPB350	3/0	$\leq 0.010m \Omega$		$\geq 7000N$
	250kcmil	$\leq 0.008m \Omega$		$\geq 10000N$

Table 2



Figure 3.Example of double type B crimp

1.4. Assemble the tail cover and cable sealing body in turn to the correct position, and then tighten the tail nut according to the torque in Table 3.

Connector	Specification of thread	Tightening torque (N.m)
ESC-HPB300	M25	7.0-9.0
ESC-HPB350	M27	8.0-10.0

Table 3

2. Socket installation instructions

2.1. Recommended hole sizes for installing panels.

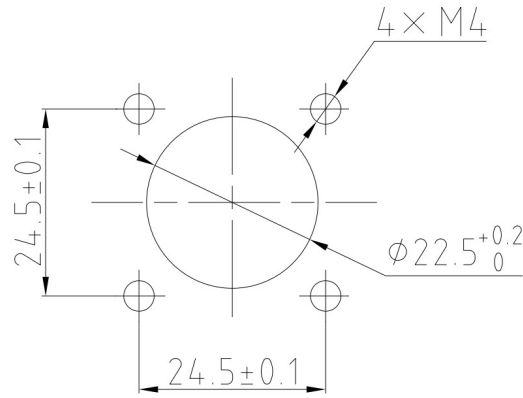


Figure 5.ESC-HPB300 Connector

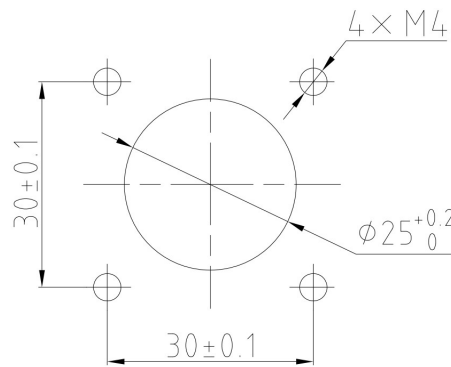


Figure 6.ESC-HPB350 Connector

2.2. The socket is installed on the panel with four M3 or M4 screws. It is recommended that the thickness of the panel and the installed screws after installation exceed the length of the Panel, as shown in Figure 7. The screw tightening torque is 0.6-0.8N.m or 1.8-2.2N.m.

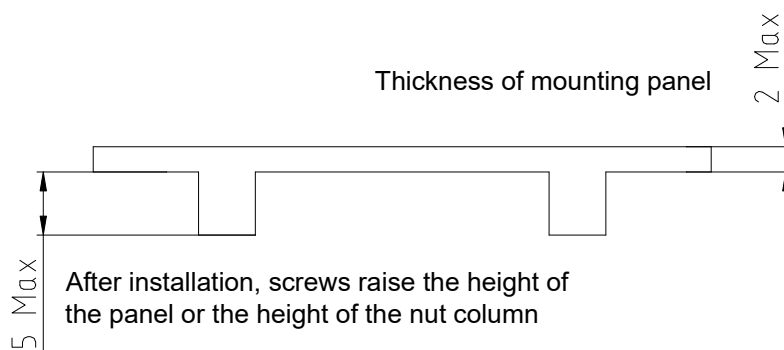


Figure 7

2.3. Wiring Screw Information

Specification of thread	Tightening torque(N.m)
M6	6-7
M8	10-12

Table 4